

LED SPOT LIGHT IP44

PRODUCT CODE : DC75-10F-90-44503CT

DESCRIPTION

This is a trim cover exchangeable modular downlight with four optional optical modules, it's with ADC12 heat sink, PMMA lens and 15° / 24° / 36° / 50° beam angle as options. Meanwhile, it adopts magnet splice and quick clips design, make assemble and installation more convenience. UGR<19, IP44 available, SDCM<4, it's a great luminaire which very suitable for high-end lighting applications.



TECHNICAL DETAILS

Mounting	Recessed
Voltage	AC220-240V
LED Source	LED
LED Chip	Bridgelux
Power (W)	10W
Lumen	800 lm (+/- 5%)
CRI	90
IP Rating	IP44
Beam Angle	50°
CCT (K)	3000K
Power Factor	≥0.9
UGR	<19
Safety Class	Class 2
Life span	50,000 hrs
Driver	On / off / 0-10 / Dali
Color	White
Trim	circular
Orientation	Fixed
Diameter (mm)	Ø82
Height (mm)	Ø85
Cutout Dia (mm)	Ø75
Rated Input Voltage(V)	AC230V
Input Voltage(V)	AC200~240V
LED Module Input	DC33~38V
Light Source	COB
SDCM	<2
Product Finishing	RAL9007
Optics Material	PMMA
Housing Material	Aluminium
Lifetime (hr)	50,000h



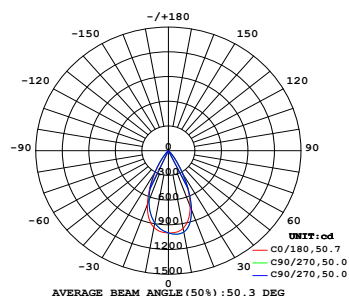
CONFIGURATION

DC75	F	10W	800lm	90	IP44	50°	3000K	C	N
------	---	-----	-------	----	------	-----	-------	---	---

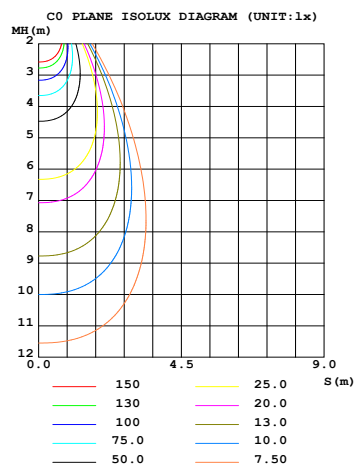
FAMILY	ORIENTATION	POWER	LUMEN	CRI	IP	ANGLE	CCT (K)	TRIM	DIMMING
D55	F: Fixed	4.5W / 8W	350 lm / 550 lm	90	IP 20	15°	27K : 2700K	C: CIRCULAR	N: Non-Dim
D75	A:: Adjustable	7.5W / 10W	650 lm / 800 lm	80	IP44	24°	30K : 3000K	S: SQUARE	D: DALI
		12W / 15W	950 lm / 1000 lm			36°	50K : 4000K	CT: Circular trimless	
D105		14W / 20W	1250 lm / 1750 lm			50°		ST: Square trimless	
		25W / 30W	2100 lm / 2400 lm						
D150		30W / 35W	3100 lm / 3500 lm						
		40W / 45W	3900 lm / 4300 lm						

PHOTOMETRIC DIAGRAM :

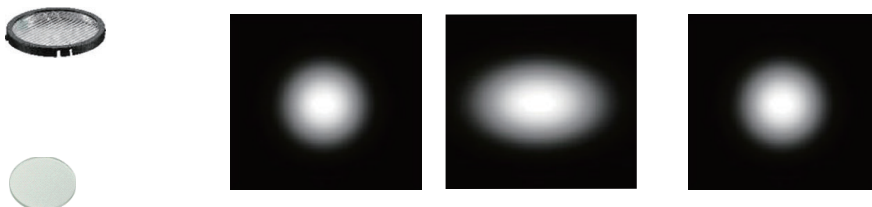
Distribution diagram



Plane isolux diagram



OPTICAL ACCESSORIES



DRIVER OPTIONS

DALI



DESCRIPTION

Tridonic Driver
Compact Dimming
Independent constant current LED driver
Dimmable via DALI-2
Dimming range 1 to 100 % (min. 5 mA)
Output current adjustable between 100 – 1,050 mA with DALI or NFC
Power input on stand-by < 0.5 W
Nominal lifetime up to 100,000 h
Adjustable output current in 1-mA-steps (NFC, DALI-2)

ON-OFF



DESCRIPTION

Tridonic Driver
Compact fixed output
Independent driver with strain-relief housing
For luminaires of protection class I and protection class II
Temperature protection as per EN 61347-2-13 C5e
Output current 250 mA
Nominal lifetime up to 50,000 h
No output current overshoot at mains on/off

0-10

INSTALLATION

WARNING

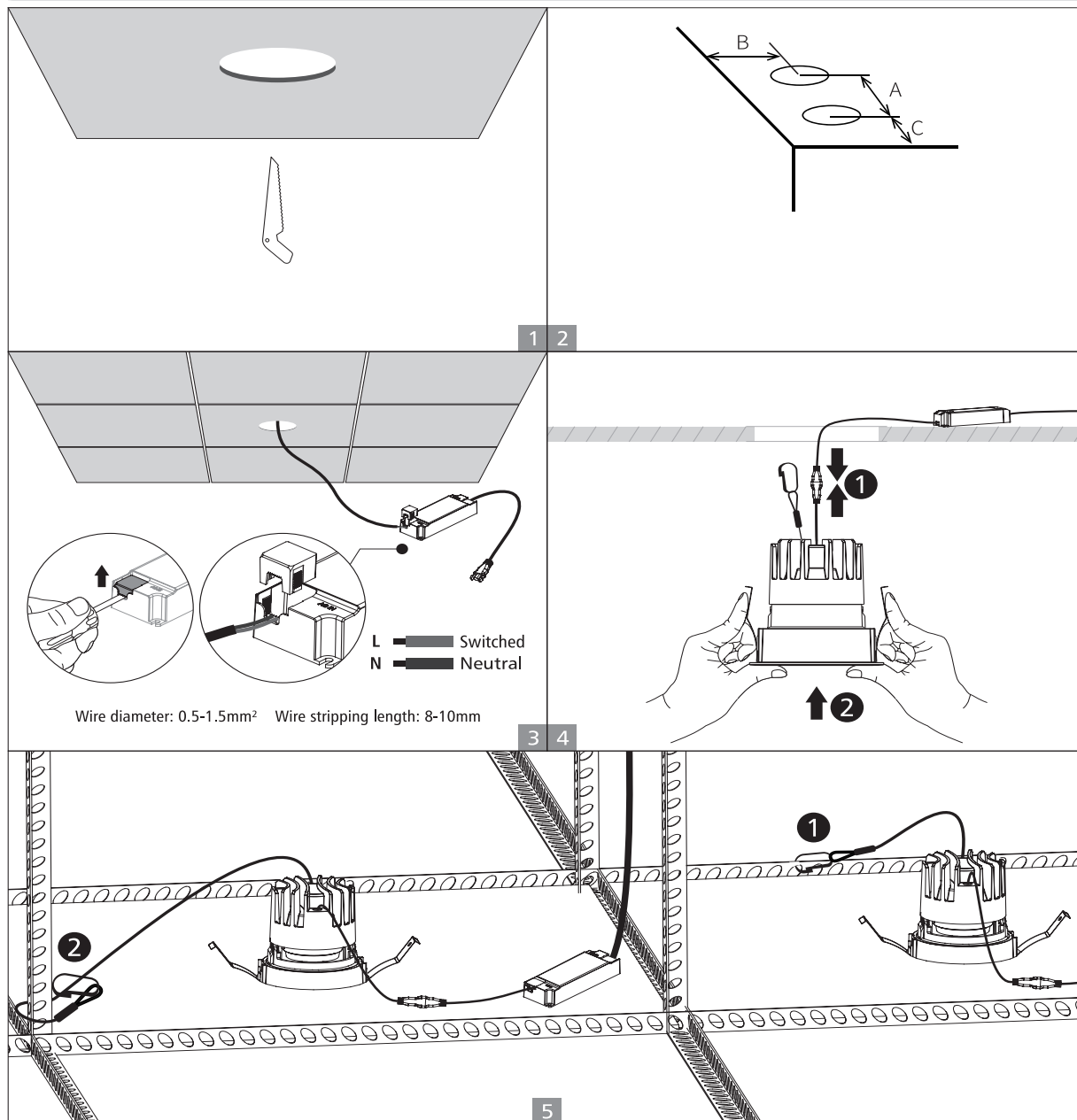
1. Switch off before installation.
2. Switch on only after complete installation and examination of the circuit.
3. Professional electrician for installation and maintenance only.



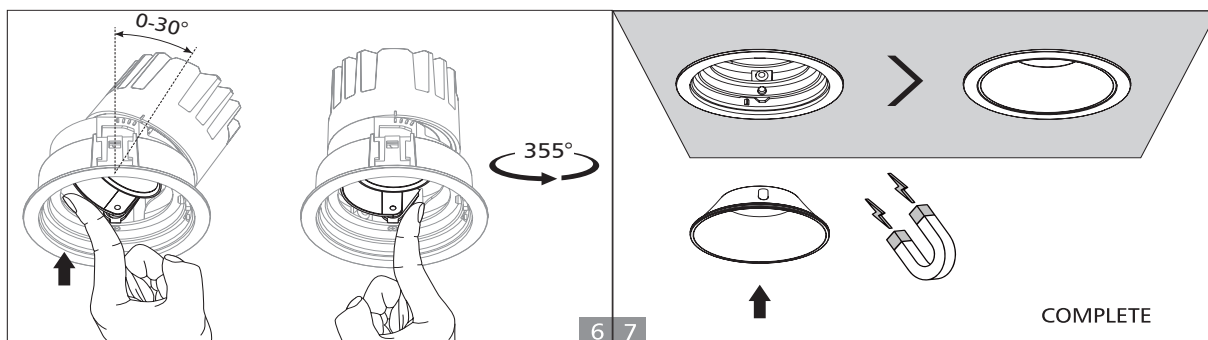
Turn Off
Power Supply



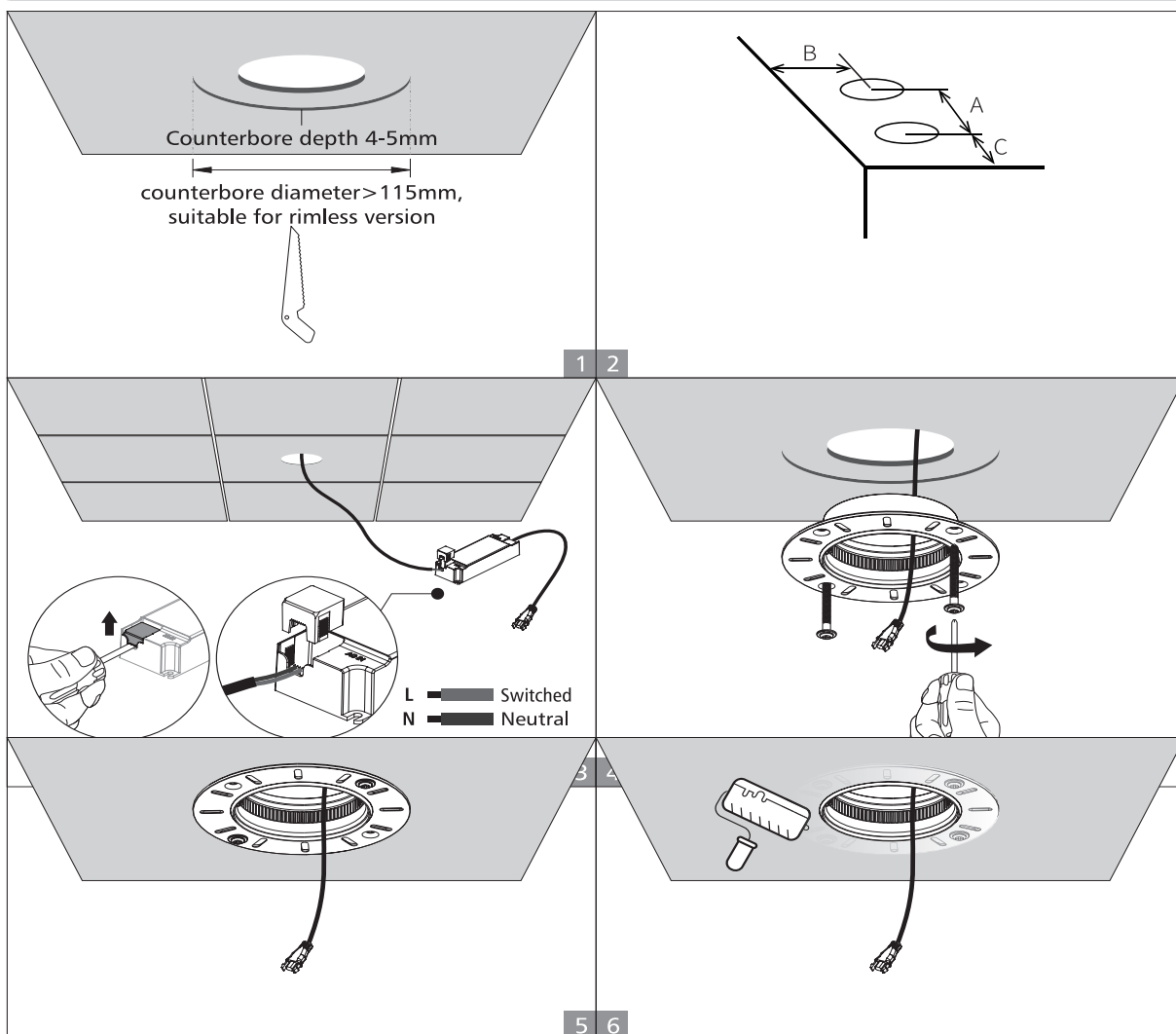
Standard rim version



INSTALLATION



Standard rimless version



INSTALLATION

